

B55

weatherproof flexibility



EMERGENCY LIGHTING LUMINAIRES

Enhanced weatherproofing thanks to flexible cable entries.

Plug-in product

It is designed so that the base can be installed and connected on starting work, and the product plugged in at the end of the installation.

The connection terminals are located in the plug-in base.

Mechanical protection

IP 55, IK 07.

Installation speed

Flexible cable entries for \varnothing 16, 20 and 25 mm tube.

Large cabling space up to the screw terminals.

Product snaps shut.

Remote control terminals protected against accidental mains connection.

Installation solutions

Surface-mounted solutions.

Compatibility

With B44 and B65, same fixing points.



Non maintained and combined units.

6 W and PL 11 W lamps.

100-450 lumens.

1 and 2 hours duration time.

IP 55, IK 07.

With **plug-in base**.

Transparent diffuser.

Manufactured in accordance with International and European standards:

IEC and EN 60598-2-22.



Flexible cable entries.

*Particularly suitable for:
Sports grounds, external staircases, garages,
industrial premises, swimming pools.*



Ample space for cable handling and storage.
Connected via 2 x 2.5 mm² screw terminals.



On completing work, plug the reflector into the base.



Product snaps shut.

B55 emergency lighting units

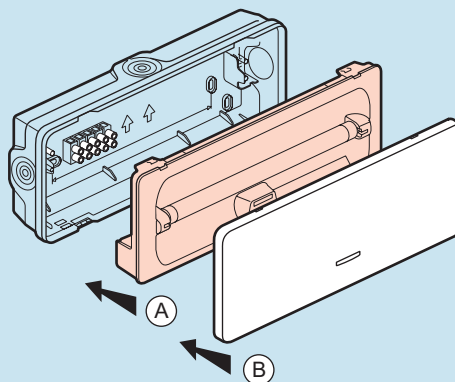


6614 03

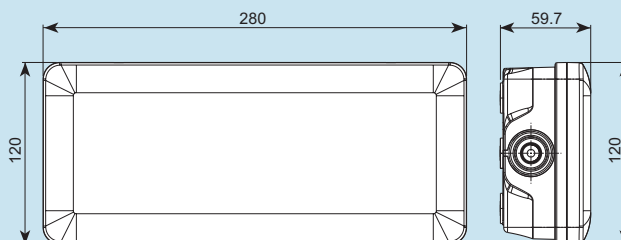
Pack	Cat.Nos	Self-contained emergency lighting luminaires																		
		<p>Certified to IEC and EN 60598-2-22 standards Non-maintained and combined units 6 W and PL 11 W lamps IP 55, IK 07. Class II Ⓜ Plug-in base to ease fixing, cabling and connection Transparent diffuser Duration time: 1 and 2 hours Ni-Cd batteries Recharge time: 24 hours Green LED charge monitor Power supply: 230 V ± 10% High-capacity screw terminals (2 x 2.5 mm²) Stand-by mode via remote control Cat.Nos 039 00 or 039 01 3 flexible cable entries for Ø 16, 20 and 25 mm tube One on each side and one on the top</p>																		
		<p>Standard non-maintained 6 W and 11 W fluorescent luminaires</p> <table border="1"> <thead> <tr> <th>Lumen output</th> <th>Duration time</th> <th>Lamps</th> </tr> </thead> <tbody> <tr> <td>100</td> <td>1 h</td> <td>TL6W</td> </tr> <tr> <td>170</td> <td>1 h</td> <td>TL6W</td> </tr> <tr> <td>300</td> <td>1 h</td> <td>TL6W</td> </tr> <tr> <td>450</td> <td>1 h</td> <td>PL11W</td> </tr> <tr> <td>200</td> <td>2 h</td> <td>PL11W</td> </tr> </tbody> </table>	Lumen output	Duration time	Lamps	100	1 h	TL6W	170	1 h	TL6W	300	1 h	TL6W	450	1 h	PL11W	200	2 h	PL11W
Lumen output	Duration time	Lamps																		
100	1 h	TL6W																		
170	1 h	TL6W																		
300	1 h	TL6W																		
450	1 h	PL11W																		
200	2 h	PL11W																		
		<p>Standard combined 2 x 6 W fluorescent luminaires</p> <table border="1"> <tbody> <tr> <td>100</td> <td>1 h</td> <td>2 x TL6W</td> </tr> <tr> <td>250</td> <td>1 h</td> <td>2 x TL6W</td> </tr> </tbody> </table>	100	1 h	2 x TL6W	250	1 h	2 x TL6W												
100	1 h	2 x TL6W																		
250	1 h	2 x TL6W																		
1	6614 01																			
1	6614 02																			
1	6614 03																			
1	6614 04																			
1	6614 09																			
1	6614 23																			
1	6614 24																			

B55 technical information

■ Surface-mounted installation



■ Dimensions (in mm)





**World Headquarters
and International Department**

128, av. du Maréchal-de-Lattre-de-Tassigny
87045 Limoges Cedex - France

☎ : + 33 (0) 5 55 06 87 87

Fax: + 33 (0) 5 55 06 74 55

www.legrandgroup.com